

IT9380 Solar Battery Test Software

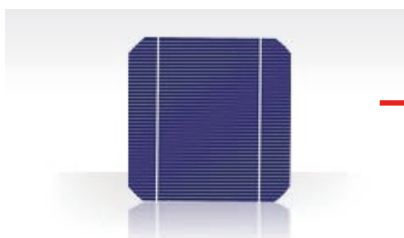
IT9380 solar battery test software is the professional software aims for solar IV characteristic. With combination of ITECH programmable electronic loads IT8700/IT8800/IT8900, the solar battery test system is built up. It can test solar battery IV characteristic under kinds of Spectrums and light sources, and supports long time automatic testing. With the ambient temperature and sunlight irradiance changing, the IV characteristics and conversion efficiency of the solar battery will change. When the ambient temperature goes up, the shape of I-V curve will change at the same time and filling factor will go down. Also the conversion efficiency will decline. Sunlight irradiance increases, output power increases, then higher conversion efficiency for solar battery. All the above factors determine that the IV characteristics of solar batteries must be ensured the accurate test results by measuring voltage at multi-points in a period of time.

Feature

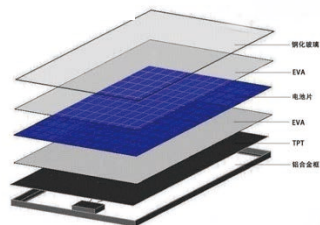
- Work with IT8700/IT8800/IT8900 series electronic loads for different DUTs
- Set up testing interval and time period, the software manages periodic scan during time period, automatic testing
- Support multi-channel testing at the same time, free to switch the interface of each channel
- Testing data can be exported to save in excel format

Functions & specification requirements

Equipment Name	Function Requirements	Specification Requirements	Recommended models
DC Electronic Load	1.High voltage and current measurement speed	Single channel test	IT8800/IT8900 series
	2.High accuracy and high resolution	Multi-channel test	IT8700 series



solar cells

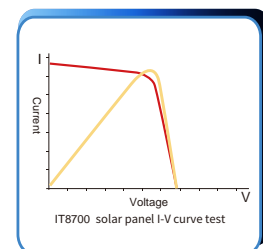
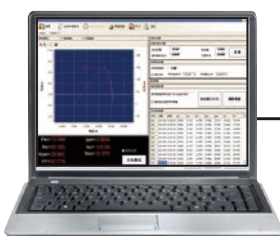


Solar cell components



Solar array

System structure



Test items

Test Parameters

Short circuit current(Ishort)

Open circuit voltage(Vopen)

Peak power(Pmax)

Peak power point voltage(Vpmax)

Peak power point current(Ipmax)

Peak power point resistance(Rpmax)

Fill factor(FF)

IT9380 Support connecting multiple units

IT9380 software supports multi-channel testing, It can monitor IT8700/IT8800/IT8900 in multiple channels running solar batteries testing by one computer and switch freely among the controlling interfaces.



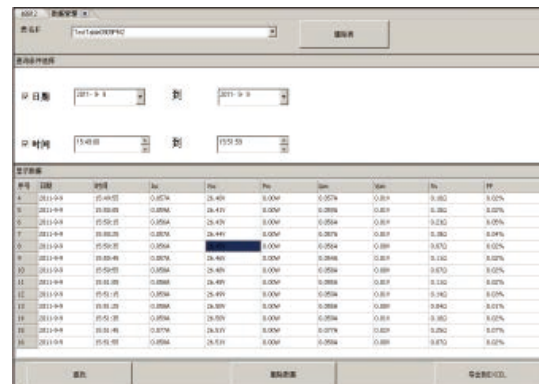
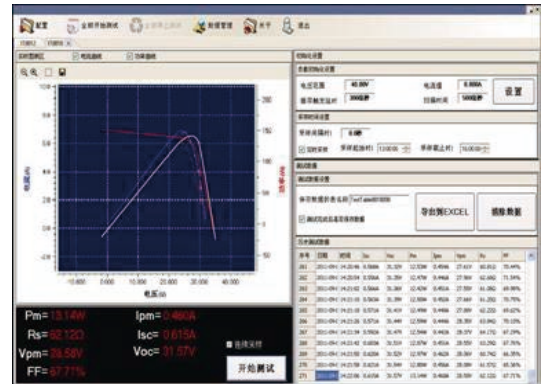
IT9380 Support Long Time Periodic Testing

Besides single test, IT9380 support multiple tests, the testing time interval and time range are available to set. The software automatically scans based on the time interval as the preset process.



Powerful Data Management

IT9380 software has batch data preservation function, you can delete or export/save your testing data in the data management interface.



IT9380 Support Multi-channel Simultaneously Testing

IT9380 software can control start/stop testing of E-loads. In multi-set connection, IT9380 software can simultaneously control electronic loads start or stop testing by clicking the "Start"/"Stop" after you set the parameter of each channel.

